

GROUND FLOOR - 50.0m²



### House Type 1A

1 Bed / 2 Person Bungalow

Area: 50.0m² (538sqft)

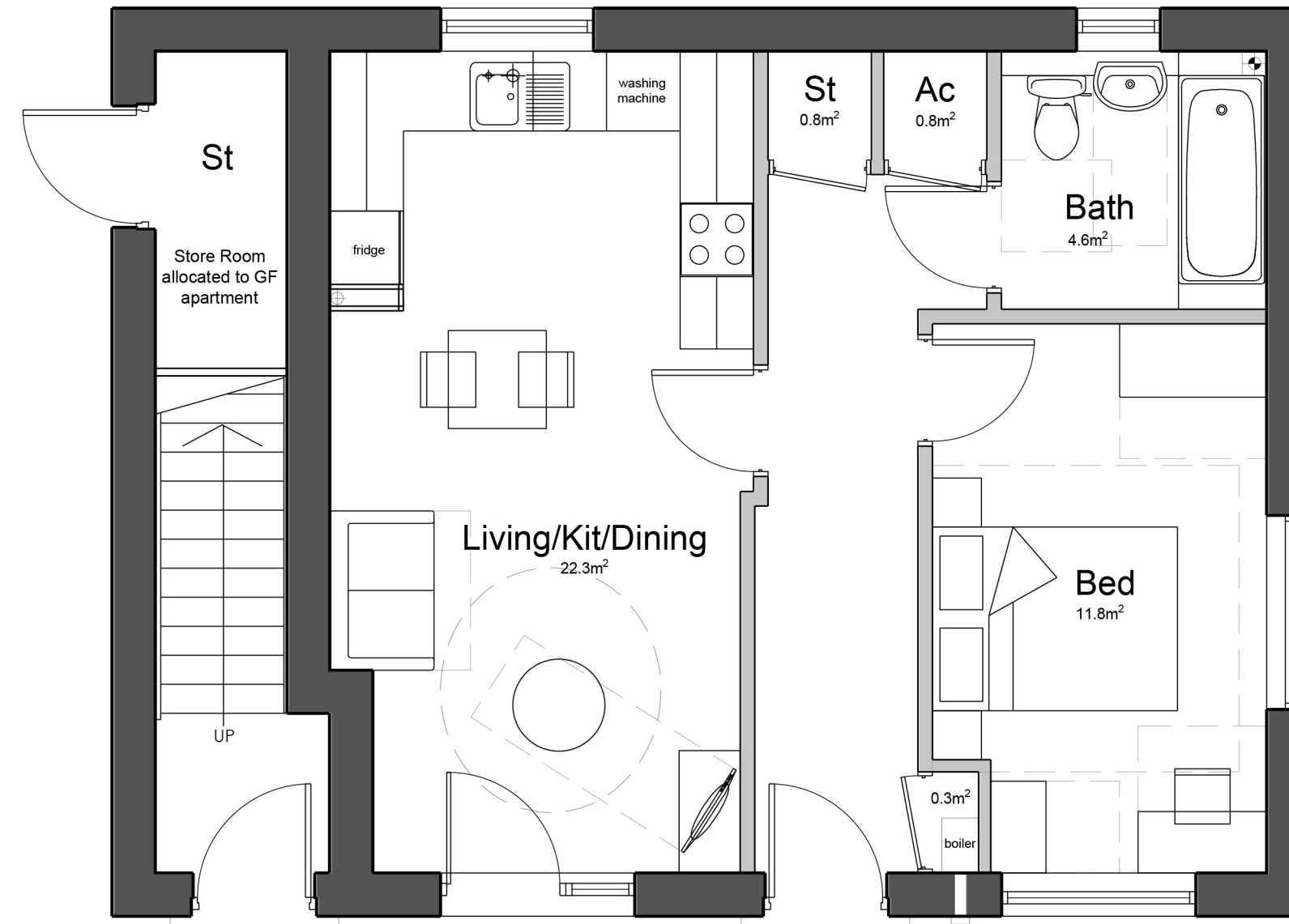
NDSS Compliant

**NOTES:**

- BESPOKE HOUSETYPE
- WINDOW POSITION / SIZES INDICATIVE SUBJECT TO DETAILED DESIGN.

### Materials List

- Red Brick
- Projecting Red Brick
- Red Brick Soldier Course
- White Render
- Grey UPVC Window
- Grey UPVC Fascia
- Grey Concrete Interlocking Tiles to Roof
- Grey UPVC Rainwater Goods
- Grey Box Canopy
- UPVC Door
- Brick Ladder Detail



APART 1C FRONT DOOR

APARTMENT 1B. GROUND FLOOR - 50.0m²

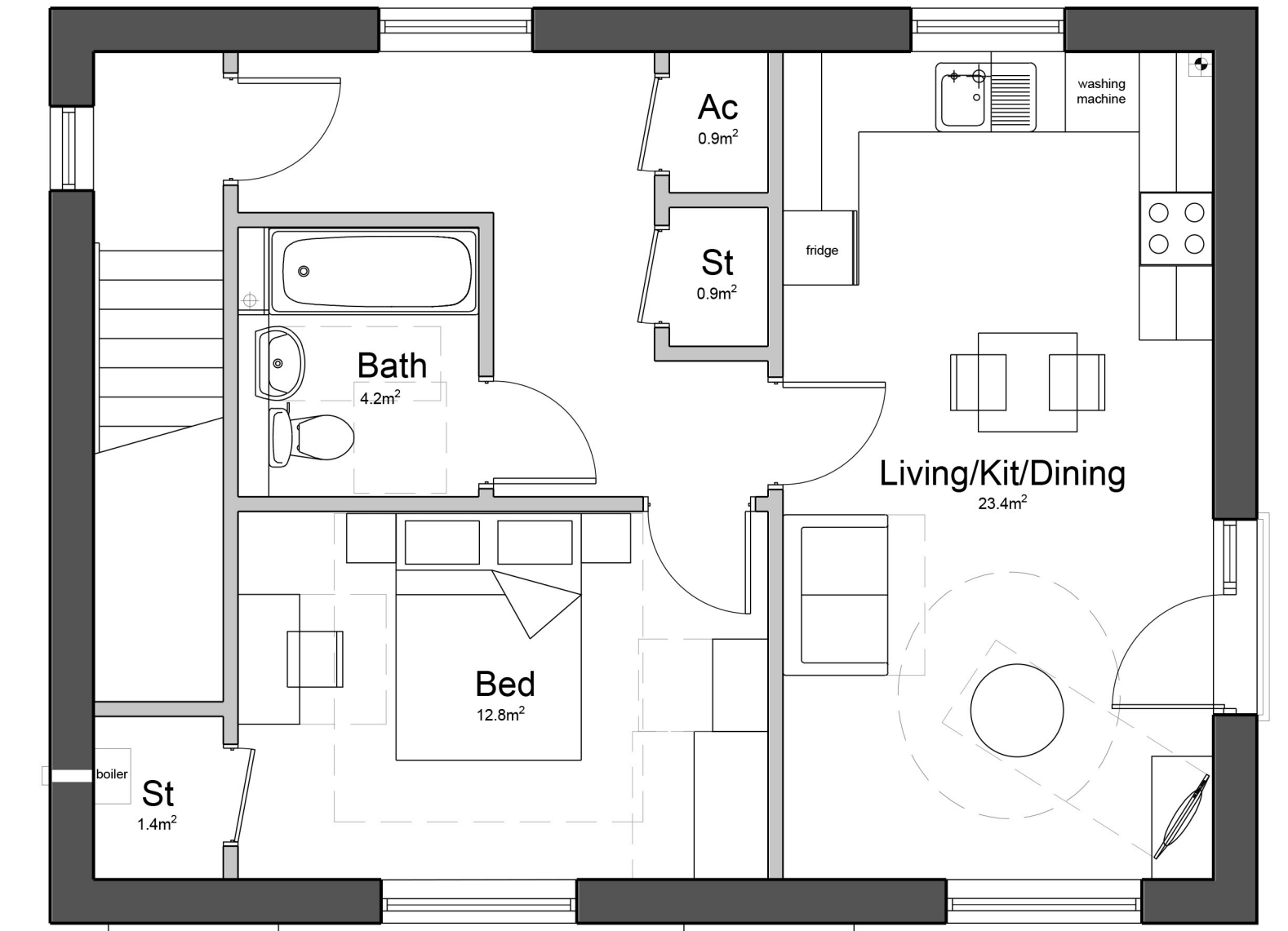
### House Type 1B & 1C

1 Bed / 2 Person Apartments

NDSS Compliant

**NOTES:**

- BESPOKE HOUSETYPES
- WINDOW POSITION / SIZES INDICATIVE SUBJECT TO DETAILED DESIGN.



APARTMENT 1C. FIRST FLOOR - 60.0m² (Area includes staircase to GF)



ELEVATION A

### House Type 1A

1 Bed / 2 Person Bungalow



ELEVATION A

### House Type 1B & 1C

1 Bed / 2 Person Apartment



ELEVATION B

Notes - Copyright in this drawing remains the property of BM3 Architecture Limited. - Do not scale this drawing. - Work to figured dimensions only. - Contractors and consultants are to advise BM3 Architecture Limited of any discrepancies.	Revision /	Date XX.08.21	By TC	Chkd PS	CDM Notes	Project GLEBE STREET TELFORD		Drawing DRAFT HOUSE TYPE ELEVATIONS			Client <b>LOVELL</b>	
						Scale 1:100@A1	Dated AUG 21	Job No. 71365	Drawing No. D11	Drawn by TC	Checked PJS	CIS/5 Element FEASIBILITY

